

How to login to VITAL - students

VITAL login - campus networked machines 1
VITAL login - off-campus/non-UoL networked..... 2
VITAL archive - 2010/11 modules and back..... 4

Overview

- You can login to VITAL from any computer connected to the Internet, on or off campus.
- Accessing VITAL from the Digital University homepage will automatically sign you in to VITAL.
- You can also log in to VITAL directly from any browser (the current [recommended browsers are listed here](#)).
- A mobile app is available for iPhones, iPads and Android devices so that you can access VITAL on your mobile device. Full details here: <http://www.liv.ac.uk/csd/mobiles-and-tablets/blackboard-mobile-learn/>
- VITAL is unavailable for a short period every night.

N.B. all modules from 2010-11 and older are found in the ‘VITAL Archive’ for staff and students. Access is described below.

VITAL login - campus networked machines

1. Log in to your PC on campus via the usual Managed Windows Service sign-in page.
2. If it hasn’t automatically started on successfully logging-in, start your usual browser for accessing the Digital University. VITAL tends to be more reliable in Firefox. Click on the **VITAL** link in the **TOOLS** section of the page as shown in the screenshot below.

[HELLO TUNDE](#) | [CUSTOMISE](#) | [HELP](#) | [LOGOUT](#)

HEADLINE NEWS



8 APRIL 2015

University of Liverpool Student wins prestigious internship to Washington



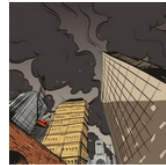
1 APRIL 2015

Careers Cabaret: "It's a competitive world"



31 MARCH 2015

Justine Miliband meets Liverpool Law students



30 MARCH 2015

"There is definitely a formula for success," says comic book artist John Higgins


SOCIAL MEDIA



LATEST FROM @LIVUNI

@prive94 Hi Vanessa, your exam timetable will be available on 17th April from 4pm on Liverpool Life :)

Follow @livuni on twitter.

STRATEGIC REVIEW	CAMPUS & COMMUNITY	TOOLS
MY LIVERPOOL	COMPUTING SERVICES	 <p>All the online tools you need on a daily basis.</p> <ul style="list-style-type: none"> Apps Anywhere iLearn Liverpool Life LUSID My Library Record My Liverpool My M: Drive My Printing (Balance £0.00) Purchase Printing Credit Stream VITAL VOCAL Webmail
SEARCH	LIBRARY	
MY ITEMS	EMAIL AND TIMETABLE	
CAREERS & EMPLOYABILITY		

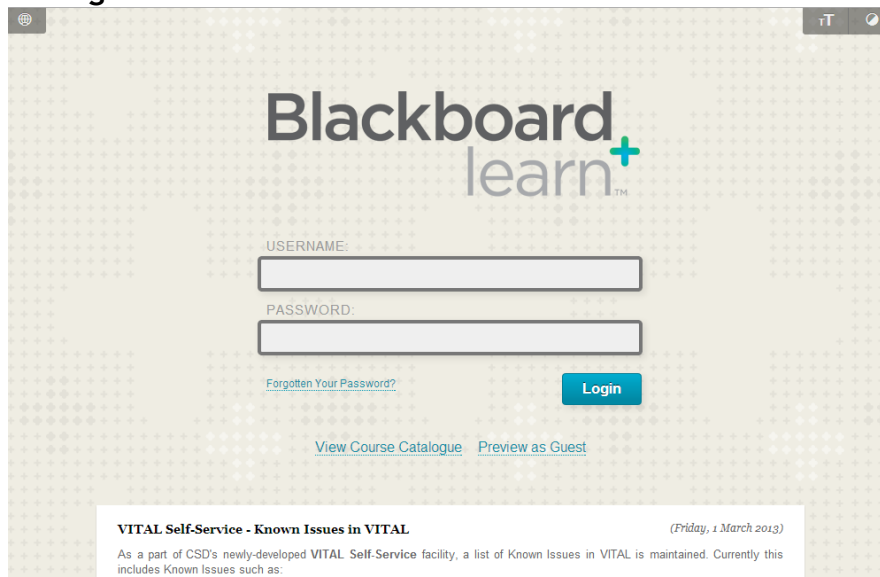
- VITAL opens and you should now see your VITAL home page with all of your modules listed in the **My Courses** box. No further sign-in is necessary.

VITAL login - off-campus/non-UoL networked

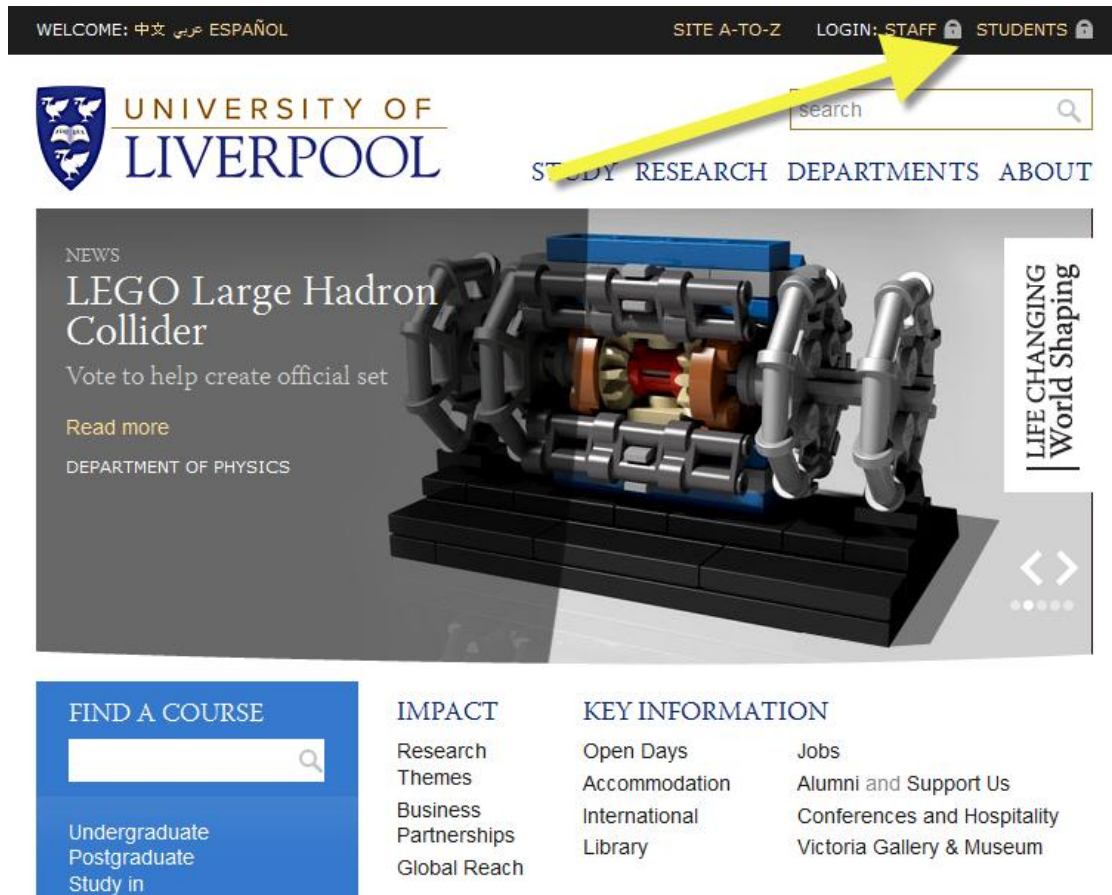
- Method 1 - direct login.** Type/copy/save as a favourite the URL <https://vital.liv.ac.uk/> into the address bar of your web browser.



- You will be taken to the VITAL login page as shown below. Enter your UoL Managed Windows Service **username** and **password** and click on the **Login** button.



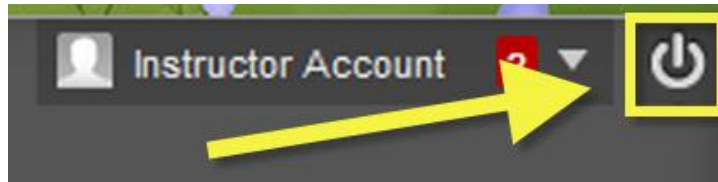
- Method 2 - Digital University.** Go to the University of Liverpool website homepage (<https://www.liv.ac.uk/>) and click on the **STUDENTS** link, as shown below.



7. Login with your usual MWS details and click on the **VITAL** link in the **TOOLS** section of your homepage page.

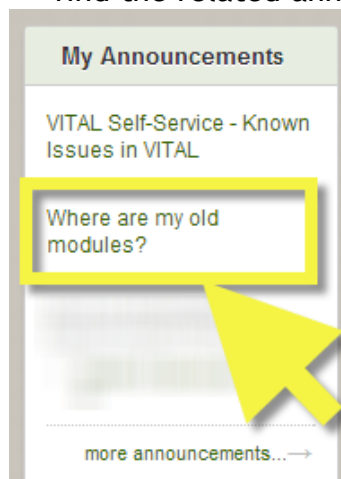
Log out of VITAL

8. When working remotely you will want to log out of VITAL. Click the 'Logout' button in the very top-right of the VITAL page.



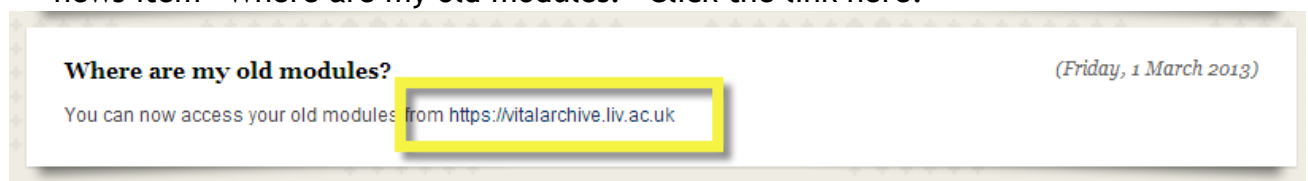
VITAL archive - 2010/11 modules and back

9. **Method 1 - VITAL announcement link.** Whilst logged-in to VITAL, all users currently have an announcement link on their homepage 'My Announcements' section, "Where are my old modules?" Click on this, find the related announcement and click the link to the VITAL archive.



10. This brings you to the VITAL Archive login page (similar to the 'live' VITAL login page shown above). Enter your usual username and password here. This takes you to the VITAL archive home page, listing all of your previous module enrolments.

11. **Method 2** - If logged-in to VITAL, log out and you see the VITAL login page. At the bottom of the page (you might have to scroll) there is a news item "Where are my old modules?" Click the link here.



12. **Method 3.** Open a web browser window and copy or type the URL <https://vitalarchive.liv.ac.uk/> into the address bar of your web browser. This brings up the VITAL archive login page as shown above.



13. If you experience any problems with the VITAL Archive then please contact the [CSD Service Desk](#) with details.